

B&FC
BLACKPOOL AND THE FYLDE COLLEGE

d+b facades
OVERCLADDING SPECIALISTS

Cleveleys Building, Blackpool
and The Fylde College

Cleveleys Building, Blackpool
and The Fylde College before



REFERENCE CONTACT

John Pye
Project Director
College Capital Projects
Ashfield Road, Bispham
Lancashire FY2 0HB
T: 01253 504349
M: 07932 605046
E: John.pye@blackpool.ac.uk

TYPE OF CONTRACT

Design and build contract JCT 2005

CONTRACT VALUE £2.46m

PROJECT DURATION 45 weeks

Client Testimonial

"Blackpool and The Fylde College are delighted with the transformational change to the seven-storey landmark Cleveleys Building which was completed on time and within budget by d+b facades.

The project was delivered around the normal working operations of a live College site and we were pleased not to have lost any teaching and learning time throughout the entire construction period thanks to d+b's approach to careful planning.

We hope to undertake future over-cladding projects at the College in forth-coming years and would welcome d+b being part of the project delivery team".

John Pye, Project Director - College Capital Projects

PROJECT SCOPE

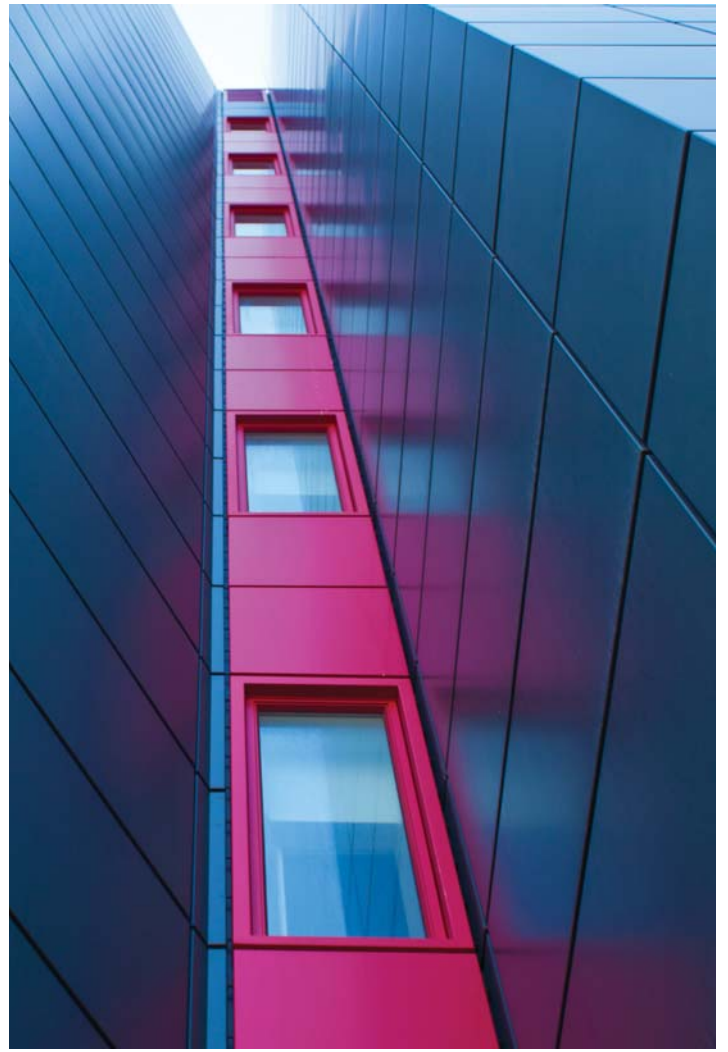
The project comprised design and build of an insulated aluminium rainscreen and replacement windows to the seven storey Cleveleys building and adjacent boiler room with local repair, restraint and stabilisation of the existing external fabric. Additional works undertaken included new aluminium glazed screens and doors at ground level and new insulated over-roofing to all roofs.

Cleveleys Building, Blackpool
and The Fylde College after





Cleveleys Building, Blackpool and The Fylde College before



Cleveleys Building, Blackpool and The Fylde College after

Cleveleys Building, Blackpool and The Fylde College before



Cleveleys Building, Blackpool and The Fylde College during





Cleveleys Building, Blackpool and The Fylde College before

Cleveleys Building, Blackpool and The Fylde College after

