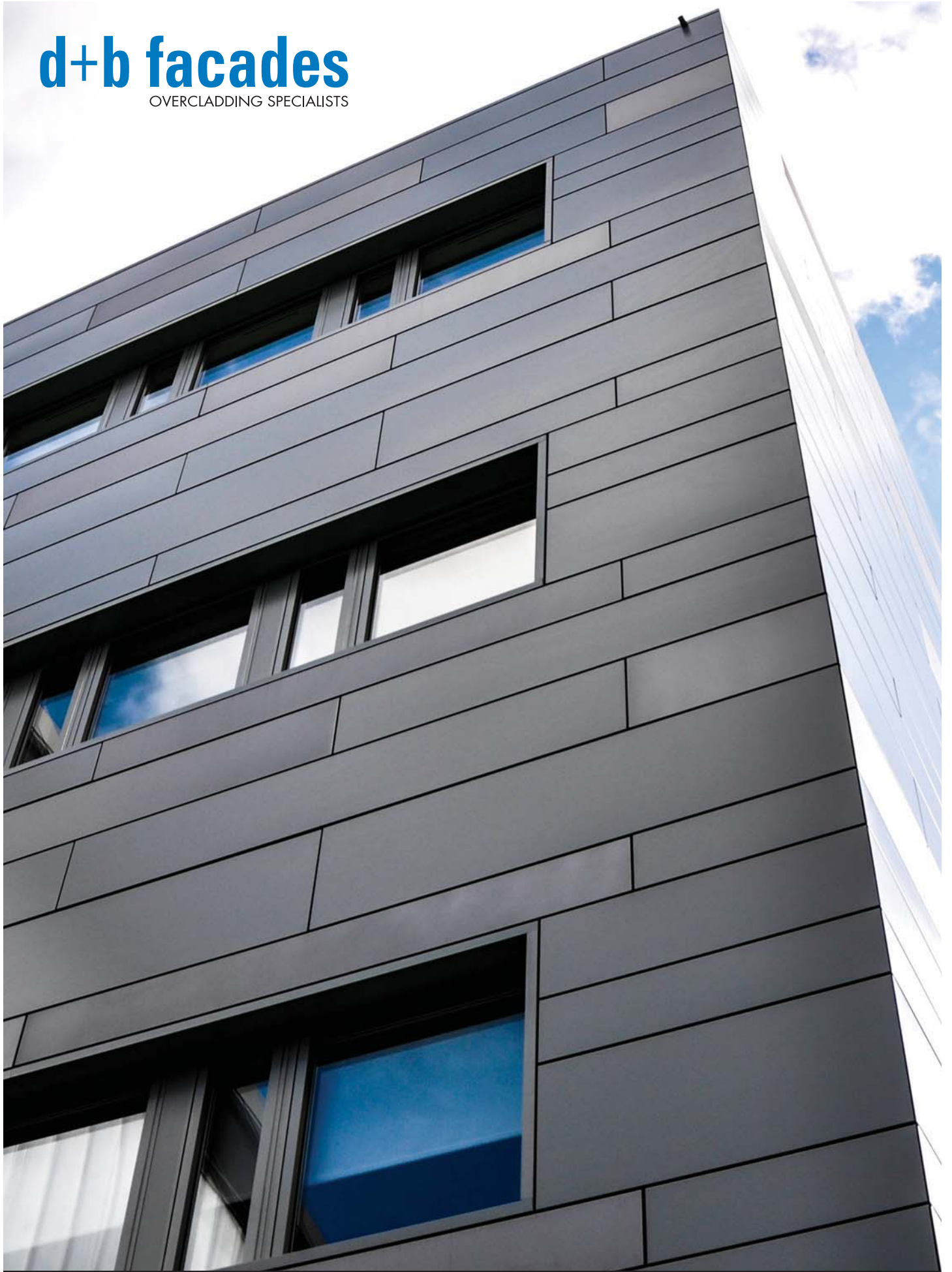


d+b facades
OVERCLADDING SPECIALISTS



North Hertfordshire College Block D



PROJECT BACKGROUND

Block D is a steel-framed building. The project comprised a lightweight, plank-shaped insulated aluminium rainscreen overcladding and replacement high-performance windows. Additional works included new doors within new ground-floor screens, integrated parapet, single ply roof overlay and demolition of the roof-top pump room. Asbestos within the existing building's fabric was not disturbed and remained in situ, a significant benefit of the overcladding approach.

REFERENCE CONTACT

Brian Sapsed
Head of Estates and Facilities
North Hertfordshire College
Hitchin Centre, Cambridge Road, Hitchin, Herts SG4 0JD
T: 01462 424209
E: bsapsed@nhc.ac.uk

TYPE OF CONTRACT

JCT Design and Build 2011

CONTRACT VALUE £0.6m

PROJECT DURATION

July 2014 – November 2014



"North Hertfordshire College approached d+b facades with regard to cladding an old 1960's building. From the first contact to completion they could not have been more helpful, working with the architects to agree a design, progressing the drawings and completing the work. All this was undertaken in an agreed programme of works with the college which allowed us to continue using the building. We now have an overclad building with improved energy efficiency that looks brand new. I would not hesitate in using d+b facades for any future projects."

Brian Sapsed, Head of Estates and Facilities

"d+b facades role as main contractor and flexible approach to the procurement, value improvement and programming aspects of the project enabled completion within the tight time and budget constraints set by North Hertfordshire College. The building remained in occupation throughout the construction phase, the early stages of which were undertaken whilst an adjacent 'live' project was nearing completion."

Neil Gooden MRICS, Associate Director
Faithful+Gould
Neil.Gooden@fgould.com T: 01223 814200

