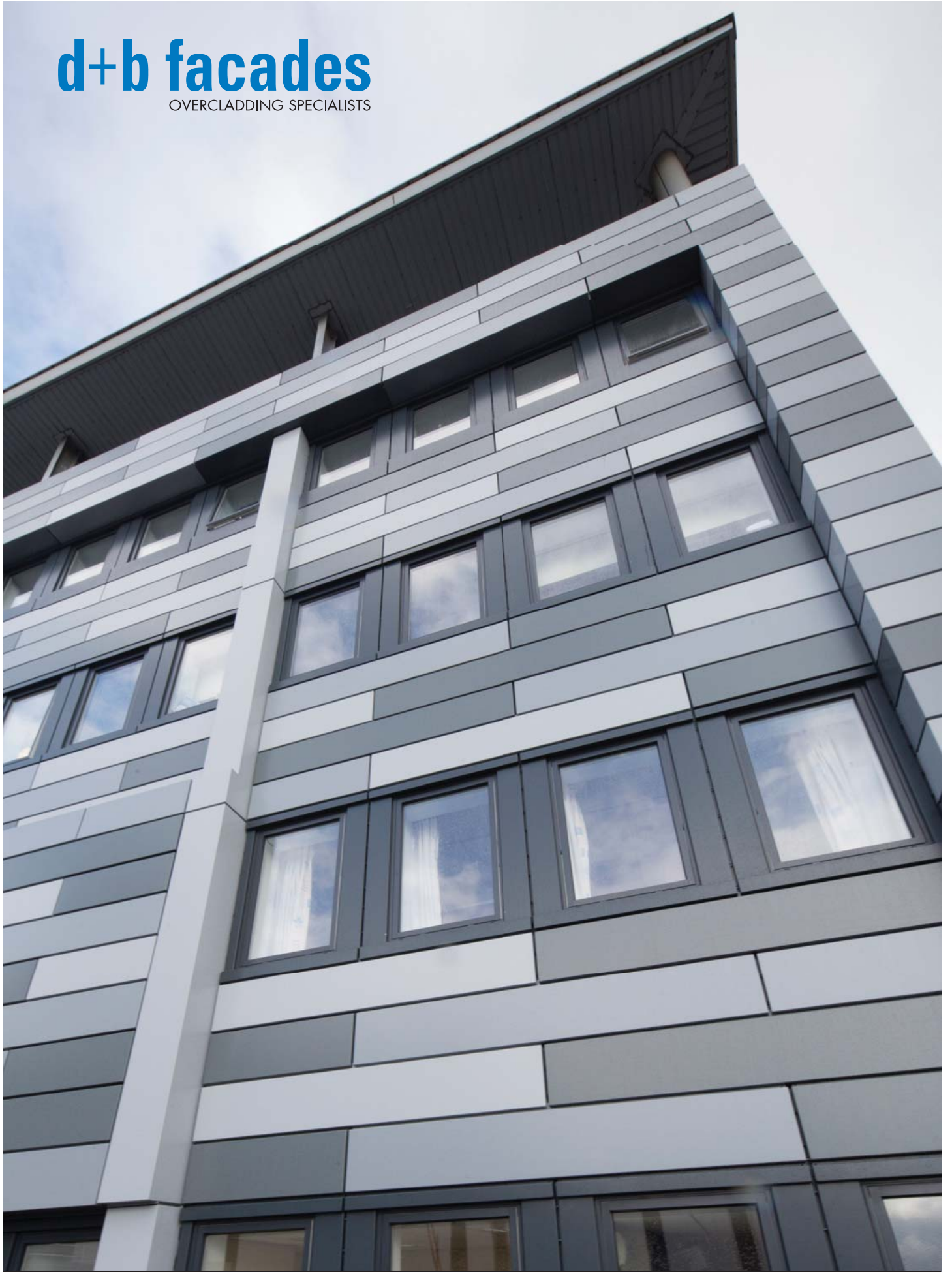


d+b facades
OVERCLADDING SPECIALISTS



Neurosurgical Block, Southern General Hospital
NHS Greater Glasgow and Clyde



PROJECT BACKGROUND

The New South Glasgow Hospitals Project is the largest design and construction project in Scotland and is being built on the site of the existing Southern General Hospital in the south-west of the city. A contract was awarded to Brookfield Multiplex Construction Europe Ltd (BMCEL) to construct the hospitals and laboratory building.

The Hospital's Board recognised the importance of upgrading buildings to be retained on the site, one of which is the Neurosurgical building. d+b facades was awarded the contract for design, supply and installation of aluminium rainscreen overcladding and high-performance replacement windows to harmonise the external appearance and finishes of this building with the surrounding new hospital estate.

"d+b facades has delivered this project on time and has massively transformed our dated Neurosurgery Building. This transformation has brought the building a contemporary look to match all the recent developments on the Queen Elizabeth University Hospital campus. d+b facades with their can do attitude made the project as trouble free as possible. This project was delivered under significant restraints to maintain clinical standards whilst the building remained fully operational."

Graham Forsyth, MAPM, PG Dip
Senior Project Manager



REFERENCE CONTACT

Graham Forsyth, MAPM, PG Dip
Senior Project Manager
Property, Procurement & Facilities Management
NHS Greater Glasgow & Clyde
Queen Elizabeth University Hospital Campus
New Office Block, Level 2, Zone 3, Room C2.13
1345 Govan Road, Glasgow
T: 0141 207 1600 M: 07980 773305

TYPE OF CONTRACT

Brookfield Multiplex Standard Order

CONTRACT VALUE £1.9m

PROJECT DURATION Oct 2015 to Oct 2016





Neurosurgical Block, Southern General Hospital NHS Greater Glasgow and Clyde





Neurosurgical Block, Southern General Hospital NHS Greater Glasgow and Clyde

