



CURRICULUM VITAE

PETER NIGEL HILLYARD BSc C.Eng

CAREER SUMMARY

1977-1979 Salisbury Technical College, OND Building & Civil Engineering

1979-1982 Portsmouth Polytechnic, BSc Civil Engineering

1983-2001 Allscott (CES) Ltd, Overcladding specialist, designer > MD

2001-2020 d+b facades UK Ltd, Overcladding specialist, founder & MD

>150 No high rise overcladding projects completed using our [+30 year developed, tested, proven, non-combustible, rainscreen system](#) with zero failures, zero ACM, PUR or EWI legacy, zero use of non-compliant materials; zero litigation, zero PI claims, every project continuing to provide desirable accommodation and meeting 2020 standards.

Developed aluminium rainscreen system in 1990 whilst working for Allscott and with system copyright, established d+b facades in 2001. A 'design build' overcladding specialist focused exclusively on external refurbishment projects. Managed the controlled, sustained growth of the Business since inception and led d+b facades to recognition as market-leader in the UK tertiary education and high rise residential sectors. Recently leading the Business in the emerging refurbishment healthcare sector with two successful hospital projects completed. Projects typically comprise Design and Build overcladding, replacement windows, over-roofing, M&E activities and periodically new build. Please refer to table below:

Accountable for:

- Business performance,
- Strategic development
- Lead designer for every project through early concept, detailed design, and regulatory compliance.

Timeline of notable projects:

ACM/HPL spec changed to Alum

Highlight Red = d+b were Main Contractor

1. 1990 Hyde Park, Sheffield (1 Tower)

[Web link](#)

Reference: The Guinness Partnership – 0303 123 1890

Value: £4.6m



2. March 1994 Lancashire Hill, Stockport (5 x Towers)

[Web link](#)

Reference: Stockport Metropolitan Borough Council - 0161 474 3451

Value: £7.4m



3. 1994 Polmont Prison (1 Towers)

Reference: 01324 711558



4. February 1995 Hunter and Belvedere, LB Hounslow (2 x Towers)

[Web link](#)

Reference: London Borough of Hounslow - 020 8583 4000

Value: £1.4m



5. September 1995 Wyler Tower, Hamilton, South Lanarkshire (1 x Tower Block)

[Web link](#)

Reference: South Lanarkshire Council - 0303 123 1015

Value: £1.10m



6. 1995 Rheidol Court Swansea (1 x Tower Block)

Reference: Swansea Council - 01792 636000

Value: £0.9m



7. 1996 Raeburn Place, Sheffield (1 x Tower)

Reference: Sheffield City Council – 0114 273 4567



8. February 1997 Grange Court, Hackney (1 x Tower Block)

[Web link](#)

Reference: London Borough of Hackney – 020 8356 3021

Value: £1.6m



9. May 1997 Glasgow Caledonian University (George Moore Building) (1 x Tower Block)

[Web link](#)

[Case study](#)

Reference: Douglas Little – 0141 331 3767 – d.little@gcu.ac.uk

Value: £750k



10. June 1997 Glasgow Caledonian University (New Health Building) (1 x Tower Block)

Reference: Douglas Little – 0141 331 3767 – d.little@gcu.ac.uk

Value:



11. May 1998 University of Plymouth (2 x Tower Blocks)

[Web link](#)

[Case study](#)

Reference: Rod Lane – 01752 232191

Value: £3.5m



12. June 1999 College of West Anglia (2 x Tower Blocks)

[Web link](#)

[Case study](#)

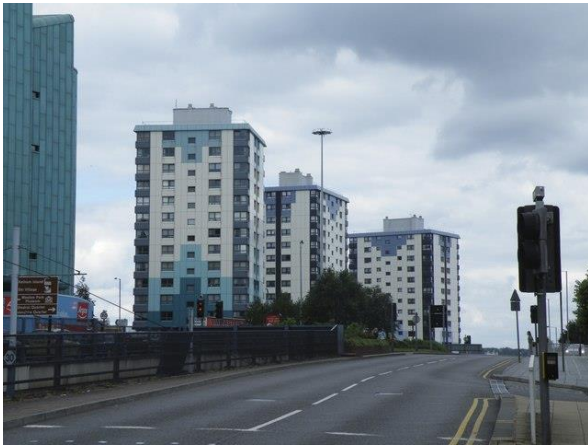
Reference: Robin Thorpe – 01603 630061

Value: £900k



13. 1999 Netherthorpe Tower Blocks, Sheffield (1 x Tower Block)

Reference: London Borough of Hackney - 020 8356 3021



14. August 2001 Pinnacle, Glasgow (1 x Tower Block)

[Web link](#)

Reference: Pinnacle Residents Association - pra@thepinnacle.org.uk

Value: £3.3m



15. October 2001 West Whitlawburn Tower Blocks (6 x 16 Storey Tower Blocks)

[Web link](#)

[Case study](#)

Reference: West Whitlawburn Housing Co-Operative Ltd – 0141 641 8628

Value: £4.2m



16. May 2003 Marple Hall School (1 x Tower Block)

[Web link](#)

[Case study](#)

Reference: Peter Fox – 0161 495 6050

Value: £916k



17. January 2003 University of Stirling (2 x Tower Blocks)

[Web link](#)

[Case study](#)

Reference: Andrew Duncan – 01786 467096 – a.a.duncan@stir.ac.uk

Value: £3.9m



18. April 2004 The Pinnacle, Willenhall (1 x Tower Block)

[Web link](#)

[Case study](#)

Reference: Pete Hillyard – 01980 654240

Value: £6m



19. March 2005 Graiseley High Rise Flats, Wolverhampton (3 x 10 Storey Tower Blocks)

[Web link](#)

[Case study](#)

Reference: Tony Ridyard – 01902 556556

Value: £3m



20. July 2005 University of Bradford Richmond Building (Phase 1) (1 x Tower Block)

[Web link](#)

[Case study](#)

Reference: Clive Wilson – 01274 233110 – r.c.wilson@bradford.ac.uk

Value: £1.3m



21. August 2007 Northumbria University (1 x Tower Block)

[Web link](#)

[Case study](#)

Reference: Gary Wilson – 0191 224 4070 – gary.wilson@northumbria.ac.uk

Value: £922k



22. May 2009 Blythswood Court, Glasgow (3 x 14 Storey Tower Blocks)

[Web link](#)

Reference: Glasgow Housing Association – 0800 479 7979
Value: £2.6m



23. May 2009 Liverpool John Moores University (James Parsons) (3 x Tower Blocks)

[Web link](#)

[Case study](#)

Reference: Colin Davies – 0151 231 5750 – c.g.davies@ljmu.ac.uk

Value: £3.3m



24. September 2009 Alpha House, Coventry (1 x Tower Block)

(Curtain wall changed to aluminium)

[Web link](#)

[Case study](#)

Reference: Paul Heffernan – 02476 767193 – paul.heffernan@wmhousing.co.uk

Value: £1.97m



25. January 2010 Blackpool & Fylde College (1 x Tower Block)

[Web link](#)

[Case study](#)

Reference: John Pye – 01253 504349 – john.pye@blackpool.ac.uk

Value: £2.46m



26. January 2011 Cornwall College (1 x Tower Block)

[Web link](#)

[Case study](#)

Reference: Malcolm Palin – 01726 226791 – Malcolm.palin@cornwall.ac.uk

Value: £1.06m



27. July 2011 Bedford College (1 x Tower Block)

[Web link](#)

[Case study](#)

Reference: Dianne Gamble – 01234 291490 – dgamble@bedford.ac.uk

Value: £967k



28. August 2011 Rochdale College (2 x Tower Blocks)

[Web link](#)

[Case study](#)

Reference: Saf Arfan – 0161 643 7560 – saf.arfan@howood.ac.uk

Value: £2.4m



29. October 2011 University of Bradford (Horton D) (1 x Tower Block)

[Web link](#)

[Case study](#)

Reference: Clive Wilson – 01274 233110 – r.c.wilson@bradford.ac.uk

Value: £1.465m



30. December 2011 St Vincent College, Gosport (2 x Tower Blocks)

[Web link](#)

[Case study](#)

Reference: Peter Monk – 02392 603580 – pmonk@stvincent.ac.uk

Value: £700k



31. January 2012 Daresbury Laboratory (2 x Tower Blocks)

[Web link](#)

[Case study](#)

Reference: Steve Dobson – 01925 603365 – steve.dobson@stfc.ac.uk

Value: £700k



32. January 2012 University of Glasgow (6 x Tower Blocks – largest being 17 storeys)

[Web link](#)

[Case study](#)

Reference: Robert Kilpatrick – 0141 330 4204

Value: £3.7m



33. January 2012 Imperial College London (ACEX Building) (1 x Tower Block)

[Web link](#)

[Case study](#)

Reference: Rob Pask – 0207 594 8924 – r.pask@imperial.ac.uk

Value: £1.1m



34. January 2012 Imperial College London (Annex Building) (1 x Tower Block)

[Web link](#)

[Case study](#)

Reference: Rob Pask – 0207 594 8924 – r.pask@imperial.ac.uk

Value: £700K



35. September 2012 Chelmsford College (3 x Tower Blocks)

[Web link](#)

[Case study](#)

Reference: Ray Cook – 01245 265611

Value: £2.1m



36. September 2012 University of Surrey (1 x Tower Block)

[Web link](#)

[Case study](#)

Reference: Ian Collis – 01483 689230 – i.collis@surrey.ac.uk

Value: £700k



37. October 2012 Liverpool John Moores University (Max Perutz) (1 x Tower Block)

[Web link](#)

[Case study](#)

Reference: Colin Davies – 0151 231 5750 – c.g.davies@ljmu.ac.uk

Value: £1.1m



38. January 2013 Blackpool and the Fylde College (3 x Tower Blocks)

[Web link](#)

[Case study](#)

Reference: John Pye - 01253 504349 - john.pye@blackpool.ac.uk

Value: £4m



39. March 2013 Stoke on Trent College (2 x Tower Blocks)

[Web link](#)

[Case study](#)

Reference: John Walley – 01782 208208 – info@stokecoll.ac.uk

Value: £1.7m



40. April 2013 Bournemouth and Poole College (North Rd Campus 2 x Tower Blocks)

[Web link](#)

[Case study](#)

Reference: Ken Roberts – 01202 205289 - robertsk@bpc.ac.uk

Value:



41. July 2013 Rutherford Appleton Laboratory, Harwell (1 x Tower Block)

[Web link:](#)

[Case study:](#)

Reference: Sean Stewart – 01235 445452 - sean.stewart@stfc.ac.uk

Value: £4.2m



42. August 2013 Aberdeen College (North East Scotland College) (2 x Tower Blocks)

[Web link](#)

[Case study:](#)

Reference: Roddy Scott – 01224 612000 – r.scott@nescol.ac.uk

Value: £6m



43. August 2013 Bournemouth and Poole College (ASDM building) (1 x Tower Block)

[Web link](#)

[Case study](#)

Reference: Ken Roberts – 01202 205289 - robertsk@bpc.ac.uk

Value: £1.2m



44. April 2014 North East Surrey College of Technology (NESCOT) (2 x Tower Blocks)

[Web link](#)

[Case study](#)

Reference: Val Neame - 07595 091790 - vneame@nescot.ac.uk

Value: £2m



45. June 2014 University of Bradford Richmond Building (Phase 2 + workshop) (1 x Tower Block + 1 x Link Block)

[Web link:](#)

[Case study:](#)

Reference: Clive Wilson – 01274 233110 – r.c.wilson@bradford.ac.uk

Value: £5.1m



46. July 2014 Fareham College (5 x Tower Blocks)

[Web link](#)

[Case study](#)

Reference: Peter Marsh – 01962 657157 – peter@petermarshconsulting.com

Value: £1.9m



47. July 2014 North Hertfordshire College (1 x Tower Block)

[Web link](#)

[Case study](#)

Reference: Brian Sapsed – 01462 424209 – bsapsed@nhc.ac.uk

Value: £600k



48. July 2014 Bristol Royal Infirmary, Queens Building (1 x Tower Block)

(ACM to aluminium)

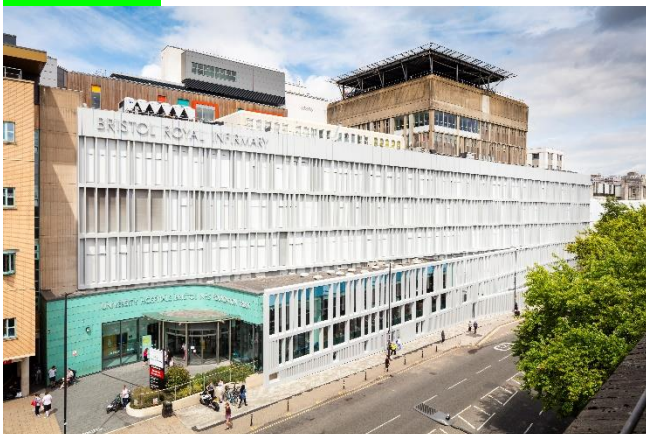
[Web link](#)

[Case study](#)

[Video](#)

Reference: Andrew Headdon - 0117 3420645 - Andy.headdon@UHBristol.nhs.uk

Value: £2.7m



49. August 2014 Stratford-Upon-Avon College (2 x Tower Blocks)

[Web link:](#)

[Case study](#)

Reference: Stuart Hill – 01789 266245 – stuarthill@stratford.ac.uk

Value: £760k



50. November 2014 Chesterfield College (2 x Tower Blocks)

[Web link](#)

[Case study](#)

Reference: Mike Thackery – 01246 500541 - thackerym@chesterfield.ac.uk

Value: £1.2m



51. 2015 Edinburgh University – Mechaston (1 x Tower Block)

(Changed from Booth Murie ACM cassettes to aluminium)

Reference: Stuart Carberry - s.carberry@napier.ac.uk



52. February 2015 University of Kent (5 storey and single storey building) (1 x Tower Block + 1 x Link Block)

[Web link](#)

[Case study](#)

Reference: John Morley – 01227 824591 - j.morley@kent.ac.uk

Value: £2.9m



53. June 2015 Rotherham College (1 Tower Block)

[Web link](http://www.dbfacades.com/portfolio/rotherham-college-eastwood-building/): <http://www.dbfacades.com/portfolio/rotherham-college-eastwood-building/>

[Case study](#)

Reference: Andrew Newton – 01709 362111 – anewton@rotherham.ac.uk

Value: £1.2



54. October 2015 Southern General Hospital, Glasgow (1 x Tower Block)

[Web link](#)

[Case study](#)

Reference: Graham Forsyth – 0141 207 1600

Value: £1.9m



55. January 2016 Bournemouth and Poole College (Lansdowne Campus) (2 x Tower Block)

[Web link](#)

[Case study](#)

Reference: Ken Roberts – 01202 205289 - robertsk@bpc.ac.uk

Value: £1.6m



56. May 2016 Glasgow Caledonian University (1 x Tower Block)

[Web link](#)

[Case study](#)

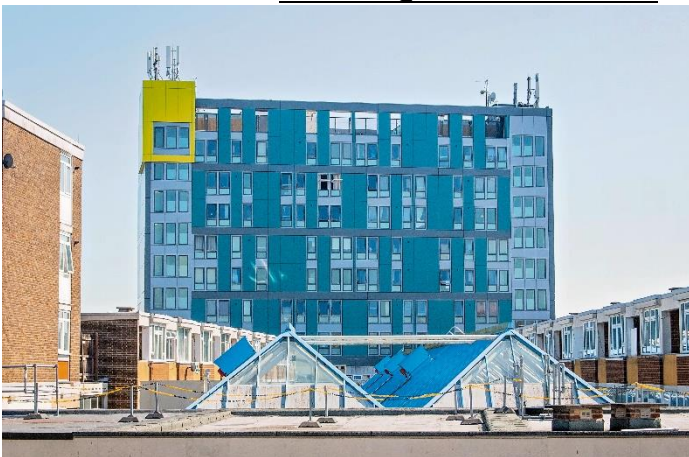
Reference: Douglas Little – 0141 331 3767 – d.little@gcu.ac.uk

Value: £2.4m



57. 2016/2017 Hockmore: Blackbird Leys (1 x Tower Block)
(HPL changed to Aluminium)

Reference: Mike Hart - mike.hart@willmottdixon.co.uk



58. September 2017 Aberystwyth University (1 x Tower Block)

(Changed from Trespa to aluminium)

Reference: David Lister - 01970 823033 - dsl@aber.ac.uk

Value: £1.3m



59. October 2017 Clements Court, Hounslow (1 x Tower Block)

[Web link](#)

[Case study](#)

Reference: Alan Cochrane – 0208 583 4434

Value: £700k



60. October 2017 University of Dundee (1 x Tower Block)

Reference: Brian Thomson - B.R.Thomson@dundee.ac.uk

Value: £1.55m



61. November 2017 King Solomon International Business School (1 x Tower Block)

[Web link](#)

[Case study](#)

Reference: Joe Southwick - joseph.southwick@bouygues-uk.com

Value: £2.1m



62. March 2018 Barnet Homes (3 x 15 Storey Tower Blocks)

[News page](#)

Reference: David Hann - David.Hann@barnethomes.org

[Case study](#)

Value: £3m



63. September 2018 Wellington Close (3 x 10 Storey Tower Blocks)
(Originally ACM and PVC windows)

[Weblink](#)

Reference: Greg Smyth - 01932 250631

Value £7m



Educational: 72 Tower Blocks
Residential: 36 Tower Blocks
Healthcare: 2 Tower Blocks

Total: 110 Tower Blocks