

Determination of SILVERSTAR glazing characteristics

Version information:
 Program 3.10
 Database 3.55
 Output format 3.21

The following characteristics are calculated with the program SILVERSTAR glaCE.

Project:

Company: Westcoast Window Systems

Employee: AM

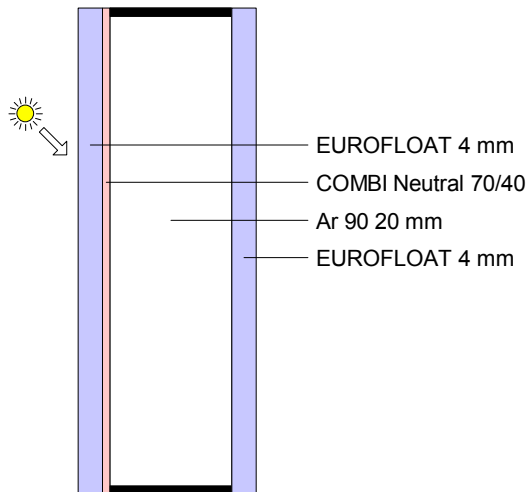
Customer: D&B Facades

Product:

Date: 01.03.2021

Glazing:


Window tilt angle: 90°



Comments:

WCW solar control glass

Calculated glazing characteristics:

Thermal transmittance Ug:	1.1 W/m ² K	EN 673:2011	
Total solar energy transmittance (solar factor g):	42 %	EN 410:2011	
Light transmittance:	73 %		
Light reflectance (outside):	12 %		
Light reflectance (inside):	13 %		
Light absorptance:	15 %		
Solar direct transmittance:	40 %		
Solar direct reflectance (outside):	31 %		
Solar direct absorptance:	30 %		
Secondary internal heat transfer factor:	3 %		
UV-Transmittance:	17 %		
UV-Reflectance:	8 %		
UV-Absorptance:	75 %		
General colour rendering index (transmission):	96		
Selectivity (light transmittance / solar factor g):	1.7		
Shading coefficient (solar factor g / 0.87):	49 %		
Shading coefficient (solar factor g / 0.8):	53 %		

The values given are only indicative and subject to change without notice.
 They do not represent any guarantee for the performance of the glazing
 Calculations are performed according to the European standards EN 410:2011 and EN 673:2011.