

20-April-21

Project Team Skills, Knowledge and Experience (SKE). System Certification, Past Projects & References

+100No major Design + Build projects completed, zero failures, zero PI claims, all meet 2020 regulations, all continue to perform, provide desirable accommodation and will do so generations to come delivering sustainable regeneration.

[CV: Founder, Pete Hillyard \(d+b facades UK Ltd\)](#)

[CV: Structural Engineer, Natasha Wright \(Curtins Consulting Ltd\)](#)

[CV: Advisor to Principal Designer, Tim Allen \(Curtins Consulting Ltd\)](#)

[CV Architect, Rosemary Parker \(BPA Architecture\)](#)

[CV Lead Building Control Officer, Terry Gordan \(Assent Building Control Ltd\)](#)

[CV Lead H&S Advisor, Leigh Johnston \(Peligro Risk Management Ltd\)](#)

[CV Building Physics Engineer, Neil Hamilton \(ZED\)](#)

[CV Fire Engineer, Alan MacMillan \(Linear Fire Safety\)](#)

System Certification

[CWCT weather performance test](#) and [video](#) showing zero wind driven rain entering cavity.

[BR135](#) test and [video](#) confirming zero deterioration of RWA45 insulation and/or RW5 cavity barrier during fire test

[Select Parliamentary Minutes ROF 24](#) Confirming real time severe fire incident fully contained

[2019 inspection/report for the +25 year old Grange Court, Hackney](#) confirming RWA45 insulation suitability/longevity

[BRE confirmatory email](#) regarding no BS test available for *full fill* cavity barriers only intumescent

[Spanatherm email](#) confirming their proprietary fire barrier is Knauf mineral wool

[Building regs Confirmation](#)

[Rockwool confirmatory email of RWA45 suitability](#)

[Benefits of Anodised Aluminium for Architectural Applications](#)

Product Data Sheets

Please follow this link to data sheets for [PPC](#), [RWA45](#), [EU list class A materials](#), [Cortex FR EPDM](#), [Westcoast Windows Tophung Reversible Window](#), [Westcoast Windows Solar Control Glass](#), [Westcoast Windows Standard Glass](#), [FR MDF](#), [HY 200 resin](#), [Siniat Weather Board](#), [FF3/FF2 Precoat Product Datasheet](#)

Past project video links

[Hyde Park, Sheffield](#)

[Wellington Close, Walton-on-Thames](#)


[The Pinnacle, Willenhall](#)

[Bristol Royal Infirmary](#)

[Residential Video](#)

[HE/FE Video](#)

110 No d+b facades system past projects 1990-2020

 ACM/HPL spec changed to Alum

Highlight Red = d+b were Main Contractor

1. 1990 Hyde Park, Sheffield (1 Tower)

[Web link](#)

Reference: The Guinness Partnership – 0303 123 1890

Value: £4.6m



2. **March 1994 Lancashire Hill, Stockport (5 x Towers)**

[Web link](#)

Reference: Stockport Metropolitan Borough Council - 0161 474 3451

Value: £7.4m



3. 1994 Polmont Prison (1 Towers)

Reference: 01324 711558



4. February 1995 Hunter and Belvedere, LB Hounslow (2 x Towers)

[Web link](#)

Reference: London Borough of Hounslow - 020 8583 4000

Value: £1.4m



5. September 1995 Wyler Tower, Hamilton, South Lanarkshire (1 x Tower Block)

[Web link](#)

Reference: South Lanarkshire Council - 0303 123 1015

Value: £1.10m



6. 1995 Rheidol Court Swansea (1 x Tower Block)

Reference: Swansea Council - 01792 636000

Value: £0.9m



7. 1996 Raeburn Place, Sheffield (1 x Tower)

Reference: Sheffield City Council – 0114 273 4567



8. February 1997 Grange Court, Hackney (1 x Tower Block)

[Web link](#)

Reference: London Borough of Hackney – 020 8356 3021

Value: £1.6m



9. May 1997 Glasgow Caledonian University (George Moore Building) (1 x Tower Block)

[Web link](#)

[Case study](#)

Reference: Douglas Little – 0141 331 3767 – d.little@gcu.ac.uk

Value: £750k



10. June 1997 Glasgow Caledonian University (New Health Building) (1 x Tower Block)

Reference: Douglas Little – 0141 331 3767 – d.little@gcu.ac.uk

Value:



11. May 1998 University of Plymouth (2 x Tower Blocks)

[Web link](#)

[Case study](#)

Reference: Rod Lane – 01752 232191

Value: £3.5m



12. June 1999 College of West Anglia (2 x Tower Blocks)

[Web link](#)

[Case study](#)

Reference: Robin Thorpe – 01603 630061

Value: £900k



13. 1999 Netherthorpe Tower Blocks, Sheffield (1 x Tower Block)

Reference: London Borough of Hackney - 020 8356 3021



14. August 2001 Pinnacle, Glasgow (1 x Tower Block)

[Web link](#)

Reference: Pinnacle Residents Association - pra@thepinnacle.org.uk

Value: £3.3m



15. October 2001 West Whitlawburn Tower Blocks (6 x 16 Storey Tower Blocks)

[Web link](#)

[Case study](#)

Reference: West Whitlawburn Housing Co-Operative Ltd – 0141 641 8628

Value: £4.2m



16. May 2003 Marple Hall School (1 x Tower Block)

[Web link](#)

[Case study](#)

Reference: Peter Fox – 0161 495 6050

Value: £916k



17. January 2003 University of Stirling (2 x Tower Blocks)

[Web link](#)

[Case study](#)

Reference: Andrew Duncan – 01786 467096 – a.a.duncan@stir.ac.uk

Value: £3.9m



18. April 2004 The Pinnacle, Willenhall (1 x Tower Block)

[Web link](#)

[Case study](#)

Reference: Pete Hillyard – 01980 654240

Value: £6m



19. March 2005 Graiseley High Rise Flats, Wolverhampton (3 x 10 Storey Tower Blocks)

[Web link](#)

[Case study](#)

Reference: Tony Ridyard – 01902 556556

Value: £3m



20. July 2005 University of Bradford Richmond Building (Phase 1) (1 x Tower Block)

[Web link](#)

[Case study](#)

Reference: Clive Wilson – 01274 233110 – r.c.wilson@bradford.ac.uk

Value: £1.3m



21. August 2007 Northumbria University (1 x Tower Block)

[Web link](#)

[Case study](#)

Reference: Gary Wilson – 0191 224 4070 – gary.wilson@northumbria.ac.uk

Value: £922k



22. May 2009 Blythswood Court, Glasgow (3 x 14 Storey Tower Blocks)

[Web link](#)

Reference: Glasgow Housing Association – 0800 479 7979

Value: £2.6m



23. May 2009 Liverpool John Moores University (James Parsons) (3 x Tower Blocks)

[Web link](#)

[Case study](#)

Reference: Colin Davies – 0151 231 5750 – c.g.davies@ljmu.ac.uk

Value: £3.3m



24. September 2009 Alpha House, Coventry (1 x Tower Block)
(Curtain wall changed to aluminium)

[Web link](#)

[Case study](#)

Reference: Paul Heffernan – 02476 767193 – paul.heffernan@wmhousing.co.uk

Value: £1.97m



25. January 2010 Blackpool & Fylde College (1 x Tower Block)

[Web link](#)

[Case study](#)

Reference: John Pye – 01253 504349 – john.pye@blackpool.ac.uk

Value: £2.46m



26. January 2011 Cornwall College (1 x Tower Block)

[Web link](#)

[Case study](#)

Reference: Malcolm Palin – 01726 226791 – Malcolm.palin@cornwall.ac.uk

Value: £1.06m



27. July 2011 Bedford College (1 x Tower Block)

[Web link](#)

[Case study](#)

Reference: Dianne Gamble – 01234 291490 – dgamble@bedford.ac.uk

Value: £967k



28. August 2011 Rochdale College (2 x Tower Blocks)

[Web link](#)

[Case study](#)

Reference: Saf Arfan – 0161 643 7560 – saf.arfan@howood.ac.uk

Value: £2.4m



29. October 2011 University of Bradford (Horton D) (1 x Tower Block)

[Web link](#)

[Case study](#)

Reference: Clive Wilson – 01274 233110 – r.c.wilson@bradford.ac.uk

Value: £1.465m



30. December 2011 St Vincent College, Gosport (2 x Tower Blocks)

[Web link](#)

[Case study](#)

Reference: Peter Monk – 02392 603580 – pmonk@stvincent.ac.uk

Value: £700k



31. January 2012 Daresbury Laboratory (2 x Tower Blocks)

[Web link](#)

[Case study](#)

Reference: Steve Dobson – 01925 603365 – steve.dobson@stfc.ac.uk

Value: £700k



32. January 2012 University of Glasgow (6 x Tower Blocks – largest being 17 storeys)

[Web link](#)

[Case study](#)

Reference: Robert Kilpatrick – 0141 330 4204

Value: £3.7m



33. January 2012 Imperial College London (ACEX Building) (1 x Tower Block)

[Web link](#)

[Case study](#)

Reference: Rob Pask – 0207 594 8924 – r.pask@imperial.ac.uk

Value: £1.1m



34. January 2012 Imperial College London (Annex Building) (1 x Tower Block)

[Web link](#)

[Case study](#)

Reference: Rob Pask – 0207 594 8924 – r.pask@imperial.ac.uk

Value: £700K



35. September 2012 Chelmsford College (3 x Tower Blocks)

[Web link](#)

[Case study](#)

Reference: Ray Cook – 01245 265611

Value: £2.1m



36. September 2012 University of Surrey (1 x Tower Block)

[Web link](#)

[Case study](#)

Reference: Ian Collis – 01483 689230 – i.collis@surrey.ac.uk

Value: £700k



37. October 2012 Liverpool John Moores University (Max Perutz) (1 x Tower Block)

[Web link](#)

[Case study](#)

Reference: Colin Davies – 0151 231 5750 – c.g.davies@ljmu.ac.uk

Value: £1.1m



38. January 2013 Blackpool and the Fylde College (3 x Tower Blocks)

[Web link](#)

[Case study](#)

Reference: John Pye - 01253 504349 - john.pye@blackpool.ac.uk

Value: £4m



39. March 2013 Stoke on Trent College (2 x Tower Blocks)

[Web link](#)

[Case study](#)

Reference: John Walley – 01782 208208 – info@stokecoll.ac.uk

Value: £1.7m



40. April 2013 Bournemouth and Poole College (North Rd Campus 2 x Tower Blocks)

[Web link](#)

[Case study](#)

Reference: Ken Roberts – 01202 205289 - robertsk@bpc.ac.uk

Value:



41. July 2013 Rutherford Appleton Laboratory, Harwell (1 x Tower Block)

[Web link:](#)

[Case study:](#)

Reference: Sean Stewart – 01235 445452 - sean.stewart@stfc.ac.uk

Value: £4.2m



42. August 2013 Aberdeen College (North East Scotland College) (2 x Tower Blocks)

[Web link](#)

[Case study:](#)

Reference: Roddy Scott – 01224 612000 – r.scott@nescol.ac.uk

Value: £6m



43. August 2013 Bournemouth and Poole College (ASDM building) (1 x Tower Block)

[Web link](#)

[Case study](#)

Reference: Ken Roberts – 01202 205289 - robertsk@bpc.ac.uk

Value: £1.2m



44. April 2014 North East Surrey College of Technology (NESCOT) (2 x Tower Blocks)

[Web link](#)

[Case study](#)

Reference: Val Neame - 07595 091790 - vneame@nescot.ac.uk

Value: £2m



45. June 2014 University of Bradford Richmond Building (Phase 2 + workshop) (1 x Tower Block + 1 x Link Block)

[Web link:](#)

[Case study:](#)

Reference: Clive Wilson – 01274 233110 – r.c.wilson@bradford.ac.uk

Value: £5.1m



46. July 2014 Fareham College (5 x Tower Blocks)

[Web link](#)

[Case study](#)

Reference: Peter Marsh – 01962 657157 – peter@petermarshconsulting.com

Value: £1.9m



47. July 2014 North Hertfordshire College (1 x Tower Block)

[Web link](#)

[Case study](#)

Reference: Brian Sapsed – 01462 424209 – bsapsed@nhc.ac.uk

Value: £600k



48. July 2014 Bristol Royal Infirmary, Queens Building (1 x Tower Block)

(ACM to aluminium)

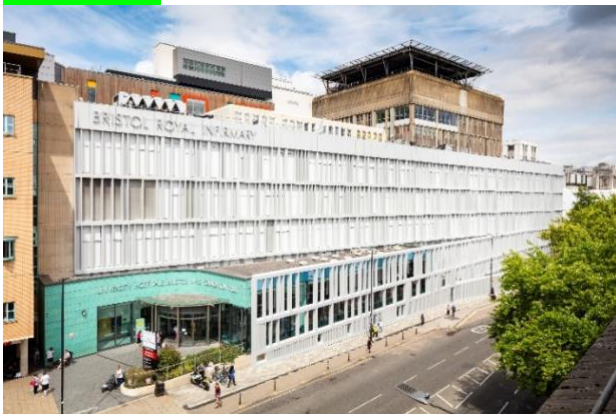
[Web link](#)

[Case study](#)

[Video](#)

Reference: Andrew Headdon - 0117 3420645 - Andy.headdon@UHBristol.nhs.uk

Value: £2.7m



49. August 2014 Stratford-Upon-Avon College (2 x Tower Blocks)

[Web link:](#)

[Case study](#)

Reference: Stuart Hill – 01789 266245 – stuarthill@stratford.ac.uk

Value: £760k



50. November 2014 Chesterfield College (2 x Tower Blocks)

[Web link](#)

[Case study](#)

Reference: Mike Thackery – 01246 500541 - thackerym@chesterfield.ac.uk

Value: £1.2m



51. 2015 Edinburgh University – Mechaston (1 x Tower Block)

(Changed from Booth Murie ACM cassettes to aluminium)

Reference: Stuart Carberry - s.carberry@napier.ac.uk



52. February 2015 University of Kent (5 storey and single storey building) (1 x Tower Block + 1 x Link Block)

[Web link](#)

[Case study](#)

Reference: John Morley – 01227 824591 - j.morley@kent.ac.uk

Value: £2.9m



53. June 2015 Rotherham College (1 Tower Block)

[Web link](http://www.dbfacades.com/portfolio/rotherham-college-eastwood-building/): <http://www.dbfacades.com/portfolio/rotherham-college-eastwood-building/>

[Case study](#)

Reference: Andrew Newton – 01709 362111 – anewton@rotherham.ac.uk

Value: £1.2



54. October 2015 Southern General Hospital, Glasgow (1 x Tower Block)

[Web link](#)

[Case study](#)

Reference: Graham Forsyth – 0141 207 1600

Value: £1.9m



55. January 2016 Bournemouth and Poole College (Lansdowne Campus) (2 x Tower Block)

[Web link](#)

[Case study](#)

Reference: Ken Roberts – 01202 205289 - robertsk@bpc.ac.uk

Value: £1.6m



56. May 2016 Glasgow Caledonian University (1 x Tower Block)

[Web link](#)

[Case study](#)

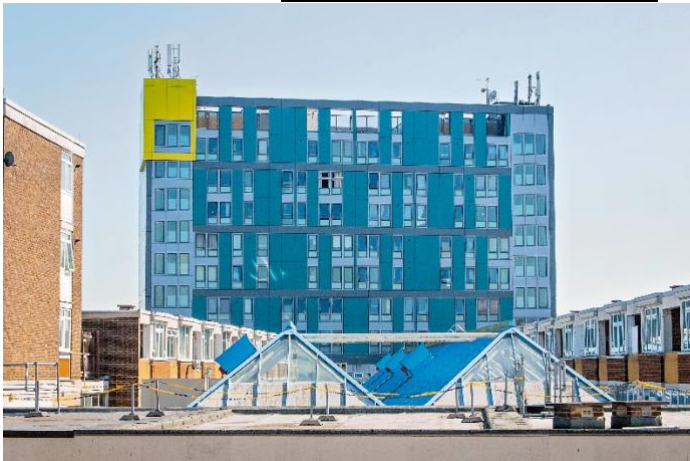
Reference: Douglas Little – 0141 331 3767 – d.little@gcu.ac.uk

Value: £2.4m



57. 2016/2017 Hockmore: Blackbird Leys (1 x Tower Block)
(HPL changed to Aluminium)

Reference: Mike Hart - mike.hart@willmottdixon.co.uk



58. September 2017 Aberystwyth University (1 x Tower Block)
(Changed from Trespa to aluminium)

Reference: David Lister - 01970 823033 - dsl@aber.ac.uk

Value: £1.3m



59. October 2017 Clements Court, Hounslow (1 x Tower Block)

[Web link](#)

[Case study](#)

Reference: Alan Cochrane – 0208 583 4434

Value: £700k



60. October 2017 University of Dundee (1 x Tower Block)

Reference: Brian Thomson - B.R.Thomson@dundee.ac.uk

Value: £1.55m



61. November 2017 King Solomon International Business School (1 x Tower Block)

[Web link](#)

[Case study](#)

Reference: Joe Southwick - joseph.southwick@bouygues-uk.com

Value: £2.1m



62. March 2018 Barnet Homes (3 x 15 Storey Tower Blocks)

[News page](#)

Reference: David Hann - David.Hann@barnethomes.org

[Case study](#)

Value: £3m



63. September 2018 Wellington Close (3 x 10 Storey Tower Blocks)
(Originally ACM and PVC windows)

[Weblink](#)

Reference: Greg Smyth - 01932 250631

Value £7m



Educational: 72 Tower Blocks

Residential: 36 Tower Blocks

Healthcare: 2 Tower Blocks

Total: 110 Tower Blocks