

Aintree University Hospital, *The Main Tower*

CONTRACT VALUE
£7.4m

BUILDING
The Main Tower

PROJECT DURATION
March 2020 – ongoing

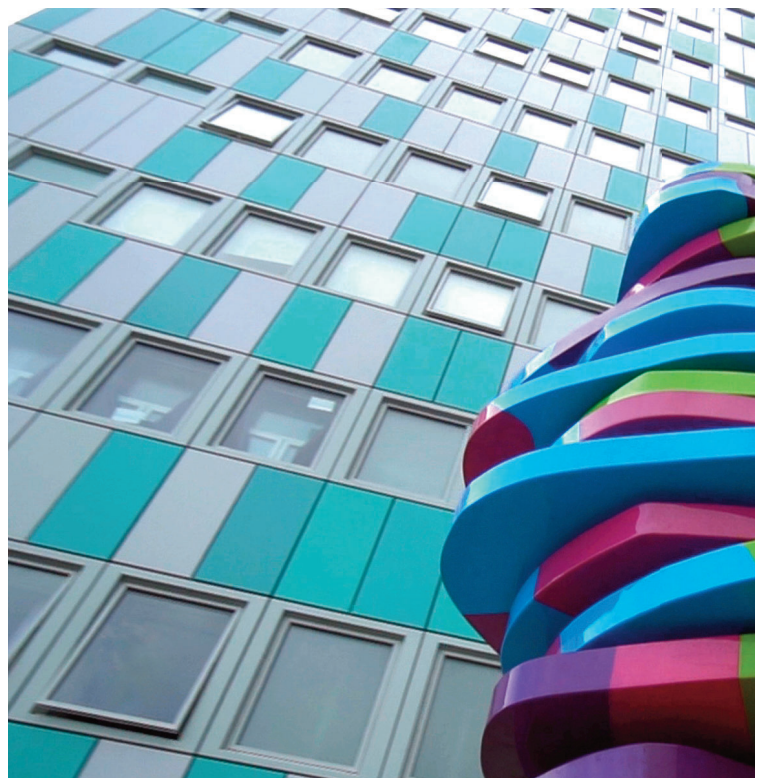
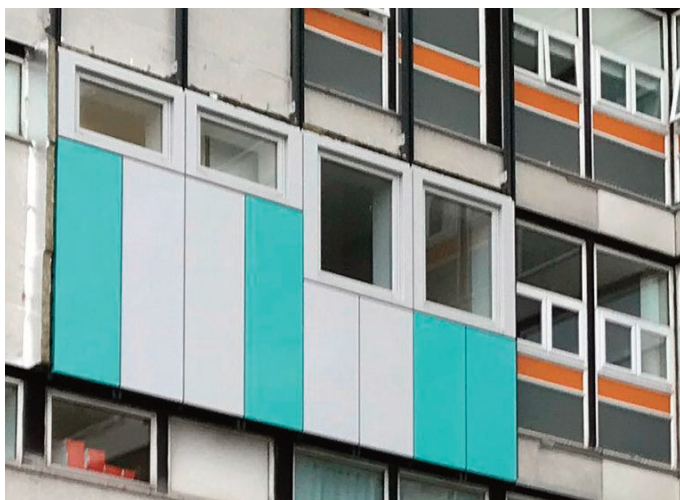
CLIENT
Aintree University Hospital,
Michael Ruffley,
Project Manager,

“d+b facades have worked with the ward staff and we’ve planned in advance and co-ordinated with the teams to make spaces available to d+b facades so they can come in and work effectively in a live environment.”



PROJECT SCOPE

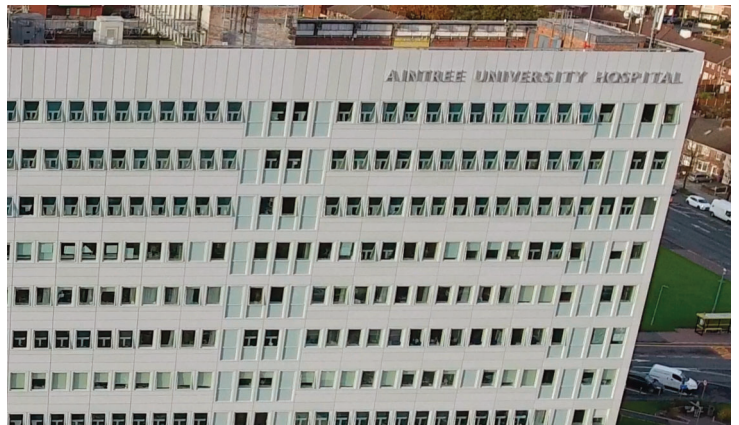
The main Tower as it is known was built in the early 1960's and this is the first major refurbishment of the entire façade comprising c12,000m² of new windows and Aluminium Rainscreen Cladding.



d+b facades have been working with all major stakeholders over an extended period to arrive at a design that meets all the NHS Trusts requirements. The design culminated in a mock-up being installed in 2019 to provide an insight to how the building will ultimately look once completed.



Aintree University Hospital, The Main Tower



Despite Covid delaying the start, strict working practices were put in place to ensure safe working for all concerned. Close liaison with the hospital staff ensured work proceeded with minimal disruption.

KEY OUTCOMES

Building life extended by more than 60 years

Heating energy consumption reduced by 70%

Operational carbon emissions reduced by 70%

Contemporary quality building - "looks like a new hospital"

Capital payback in c.10 years from savings in heating energy alone

Close collaboration ensured project progressed whilst the building was fully occupied with minimal disruption to patients and staff.

