

Highbury College Tower, Portsmouth

CONTRACT VALUE
£4.03m

BUILDING
Highbury College Tower

PROJECT DURATION
March 2020 to
March 2021

CLIENT
Highbury College

PROCUREMENT METHOD
Pretium (Hyde Housing)
Framework –
Mini Tender route

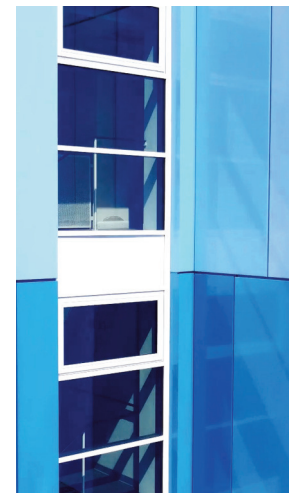
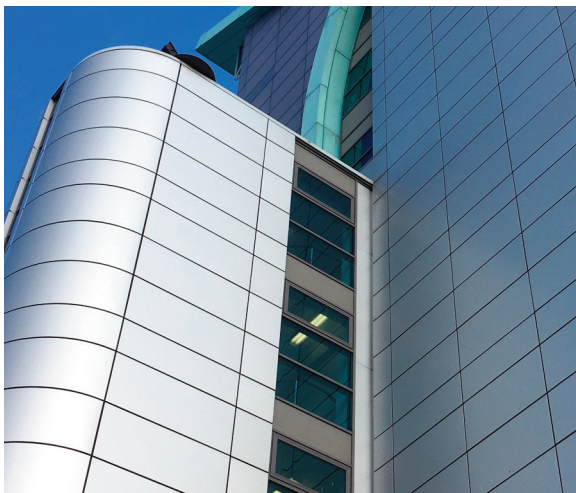


PROJECT SCOPE

Highbury College Tower is a 10 storey concrete frame building. Classrooms occupy the first 5 floors with the 5 upper floors providing single room dormitories (50 in total).

The existing building incorporates a “gull-wing roof” which needs to be removed exposing the original flat roof. The building was clad in a secret fix aluminium cassette system incorporating rubber gaskets.

The gullwing roof was cut-back and concealed by the new perimeter Louvre system at parapet level. The plantroom was also lowered so as to be concealed by the new perimeter Louvre system. The perimeter Louvre system also includes new feature LED strip lighting.



Downtakings

- Remove Alucobond ACM Panels, Remove Substructure, Remove Fibreglass Insulation & fire breaks 5000m²
- Remove Windows, Remove Curtain Wall sections
- Remove Roof cladding (lightweight steel frame supporting kalzip panels)
- VHF Ariel on roof removal, reinstatement

Reinstatements

- Concrete Repairs + Coatings
- Fit A2 or better Aluminium Secret Fix Cassette on new substructure
- New Windows, Curtain Wall



A landmark building on the Portsmouth skyline.



KEY OUTCOMES

Made 100% firesafe in just 12 weeks from commencement onsite. Building now meets the most stringent fire regulations

Future-proofed against changes to regulatory standards

Operational carbon emissions reduced and embodied carbon preserved

Heating energy consumption reduced

Building life extended by more than 60 years

d+b facades skills, knowledge and experience **(SKE)** ensured **certainty of outcome.**