

Park Reach, Southampton

**CONTRACT VALUE**

£2.03m

**BUILDING**

Park Reach

**PROJECT DURATION**

June 2022 - Oct 2023

**CLIENT**

Abri

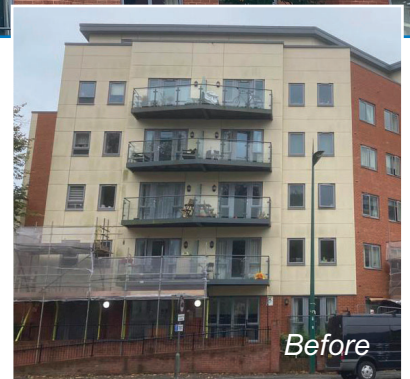
**PROCUREMENT METHOD**

Hyde Fire Safety Framework

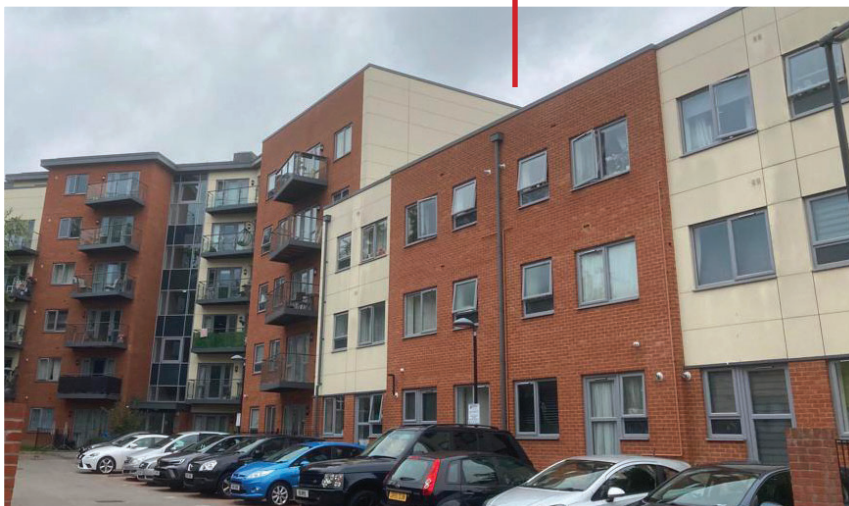


**PROJECT SCOPE**

Fire safety works, replacing existing cladding with A1 fire-safe cladding. Remove Kingspan K15 insulation and cavity barriers. Seal and retain windows, plus single drop of curtain wall. Refit new Rockwool insulation and Cavity barriers. Remove and replace Balcony Decking, ancillary Works (re-fit + test LP system). All brickwork and brickwork insulation was also replaced.







## KEY OUTCOMES

Resident safety assured with A1 fire-rated cladding installed

Best value achieved by a solution with long-term integrity surpassing current standards.

High quality refurbishment that matches the original visual look of the building

Completed whilst fully occupied with minimum disruption to residents

Should the cladding no longer be required it is 100% recyclable.