

Wiltshire College & University Centre, *Avon and Wylve Buildings, Salisbury*

CONTRACT VALUE

£1.6m

BUILDING

Avon and Wylve Buildings

PROJECT DURATION

March 2023 – Dec 2023

CLIENT

Wiltshire College &
University Centre



“ design build facades originally overclad the roadside elevations of our Salisbury campus buildings so we were delighted, through a capital transformation fund opportunity, to renew acquaintances and invite them back to ‘finish the job’.

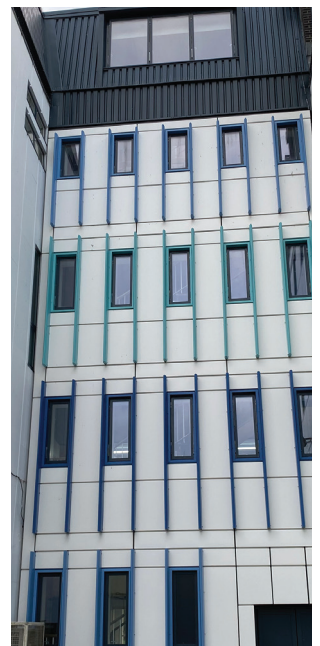
As well as completing the aesthetic uplift of the campus, the installation of new insulated cladding panels and triple glazed window units to the remaining building elevations has reduced our heating requirement by some forty hours a week, creating a significant reduction in our energy consumption and overall carbon footprint at Salisbury.”

Andy Hill,
Head of Estates and Services
Wiltshire College & University Centre



PROJECT SCOPE

Having completed the roadside elevations for Phase 1 in 2019, design build facades have now delivered Phase 2 which included overcladding and replacement windows to the remaining elevations at the rear of the buildings.





“ We have, since the cladding has been installed, had to reduce our heating timetable from 12 hrs on and 12 hrs off to, 2 hrs in the morning and 2 more over the course of the day saving us 40 hrs a week on the heating bill. A huge saving.”

Dan Stephens,
Estate Manager (SA)
Wiltshire College & University
Centre



KEY OUTCOMES

Heating energy consumption reduced by 70%

Operational carbon emissions reduced by 70%

Contemporary quality refurbishment - “looks like new” in keeping with the new build parts of the campus

Capital payback in c.10 years from savings in heating energy alone

Project progressed whilst the building was fully occupied with minimal disruption to students and staff.