



design | build facades
OVERCLADDING SPECIALIST

**Specialist Contractors
working with the NHS to
sustainably transform
dated building stock.**

www.dbfacades.com



Bristol Royal Infirmary, *Queen's Building*



INDEX

Aintree University Hospital



Bristol Royal Infirmary, Queens Building



Queen Elizabeth University Hospital,
Glasgow



York Hospital



Eastbourne District General Hospital



Gloucestershire Royal Hospital



Birmingham Women's Hospital



design | build facades

OVERCLADDING SPECIALIST

design build facades are the UK's leading sustainable refurbishment contractor for dated NHS stock.

We have completed many NHS projects and we've managed to do this whilst the hospital remains 100% operational and with minimal disruption to clinical services and normal day to day use. The best way to procure our services are via a two-stage design + build enquiry direct to the Trust where we provide our service and product from concept through to completion. We work closely with the client team and stakeholders through the design and build from the very outset to ensure smooth delivery of the specialist envelope package, resulting in a quality project on time and within budget and most importantly with minimal disruption to the hospitals normal use.

To discuss your individual overcladding requirements, please contact:

Cliff Woodhouse,
Business Development Director
M: 07894 256471
E: cliff@dbfacades.com

Design and Design Development

Prior to commencement on-site there is intensive and continuous design development with all parties working collaboratively involving the creation of mock-ups in order to achieve the stringent architectural and building performance requirements. Pictured development work for Bristol Royal Infirmary.



Early design involved the use of metal mesh.



This developed into applying film to the windows.



The final solution met the architectural intent that "Veil" should have no visible windows whilst meeting the performance requirement of transmittance of light internally.



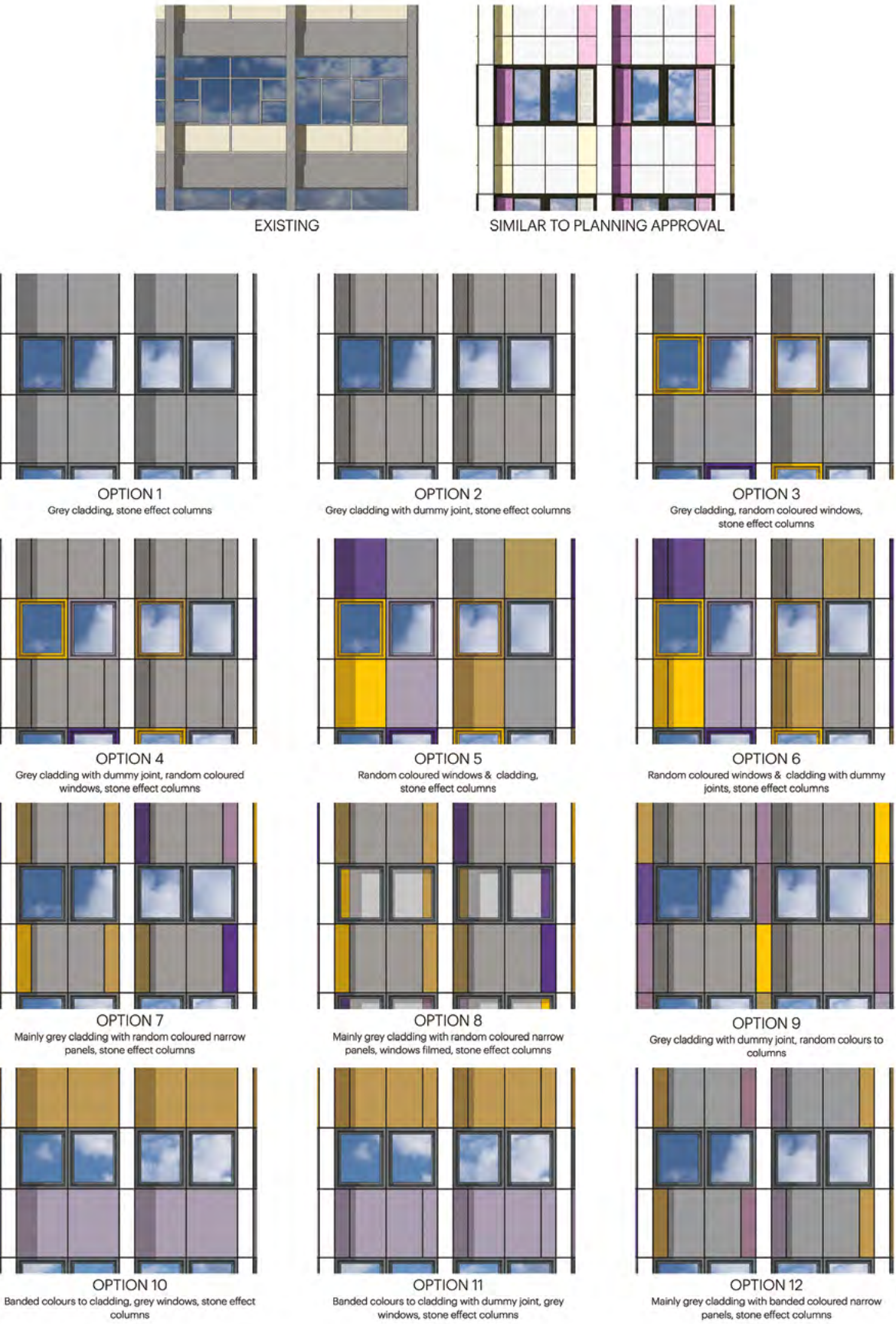
Mock-up installed on the building.



Birmingham Women’s Hospital
colour options overview. Part of
the design development.

Achieving net zero carbon emissions through a Fabric First approach

- Harnessing & reusing the existing buildings embodied carbon
- Integrates with other Low Carbon measures
- Reducing heating energy (CO2 and £'s) by up to 70%
- Strengthening, protecting, arresting decay and extending buildings life by +60 years



Scan the QR code to view design build
facades NHS projects.



VIEW VIDEO case studies:

Aintree University Hospital



Bristol Royal Infirmary



Aintree University Hospital, *The Main Tower Block*

**TO ARRANGE A SITE VISIT
TO THIS PROJECT**

Contact:

Cliff Woodhouse,
Business Development Director

M: 07894 256471

E: cliff@dbfacades.com

AINTREE UNIVERSITY HOSPITAL





“d+b facades have worked with the ward staff and we’ve planned in advance and co-ordinated with the teams to make spaces available to d+b facades so they can come in and work effectively in a live environment.”

Michael Ruffley,
Project Manager, Aintree University Hospital



TO ARRANGE A SITE VISIT
TO THIS PROJECT

Contact:

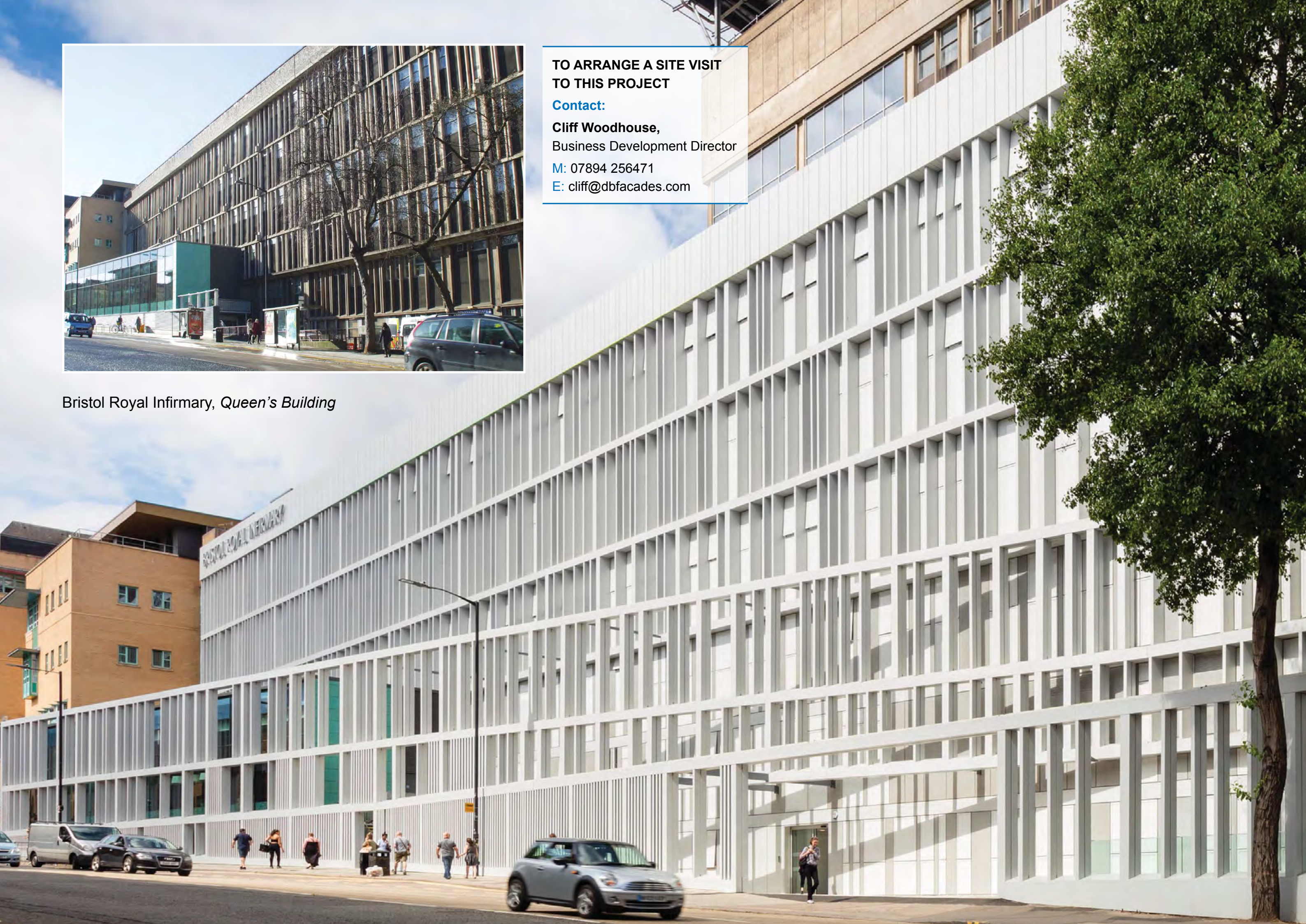
Cliff Woodhouse,
Business Development Director

M: 07894 256471

E: cliff@dbfacades.com



Bristol Royal Infirmary, *Queen's Building*





“Many thanks to everyone for ensuring the windows on A604 were completed on time. They have made so much difference to the ward and the general wellbeing of staff and patients.”

Ann Parker, Sister, Ward A604 Trauma and Orthopaedics



The Queen Elizabeth University Hospital, Glasgow, *Neurosurgery Building*

**TO ARRANGE A SITE VISIT
TO THIS PROJECT**

Contact:

Cliff Woodhouse,
Business Development Director

M: 07894 256471

E: cliff@dbfacades.com





York Hospital, *Main Ward Block*

**TO ARRANGE A SITE VISIT
TO THIS PROJECT**

Contact:

Cliff Woodhouse,
Business Development Director

M: 07894 256471

E: cliff@dbfacades.com





Eastbourne District General Hospital



“This funding will deliver improvements to Eastbourne DGH that will mean a significant reduction in the use of energy across the site which will be a key part of our aim to provide sustainable healthcare.”

Chris Hodgson, Director for Estates and Facilities, Eastbourne DGH

**TO ARRANGE A SITE VISIT
TO THIS PROJECT**

Contact:

Cliff Woodhouse,
Business Development Director

M: 07894 256471

E: cliff@dbfacades.com

Gloucestershire Royal Hospital



**TO ARRANGE A SITE VISIT
TO THIS PROJECT**

Contact:

Simon Enticknap,
Construction Director

M: 07841 782064

E: simon@dbfacades.com



Birmingham Women's Hospital

**TO ARRANGE A SITE VISIT
TO THIS PROJECT**

Contact:

Simon Enticknap,
Construction Director

M: 07841 782064

E: simon@dbfacades.com





**Ensure smooth delivery of a quality project
on time and within budget with minimal
disruption to patients and staff.**

design build facades, The Packway, Larkhill, Salisbury, SP4 8PY T: 01980 654230 E: mail@dbfacades.com





design | build facades
OVERCLADDING SPECIALIST

**Specialist Contractors
working with the NHS to
sustainably transform
dated building stock.**

www.dbfacades.com

