

Park Reach, Southampton

## CONTRACT VALUE

£2.03m

## BUILDING

Park Reach

## PROJECT DURATION

June 2022 - Oct 2023

## CLIENT

Abri

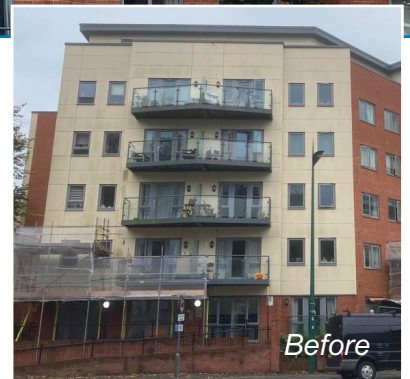
## PROCUREMENT METHOD

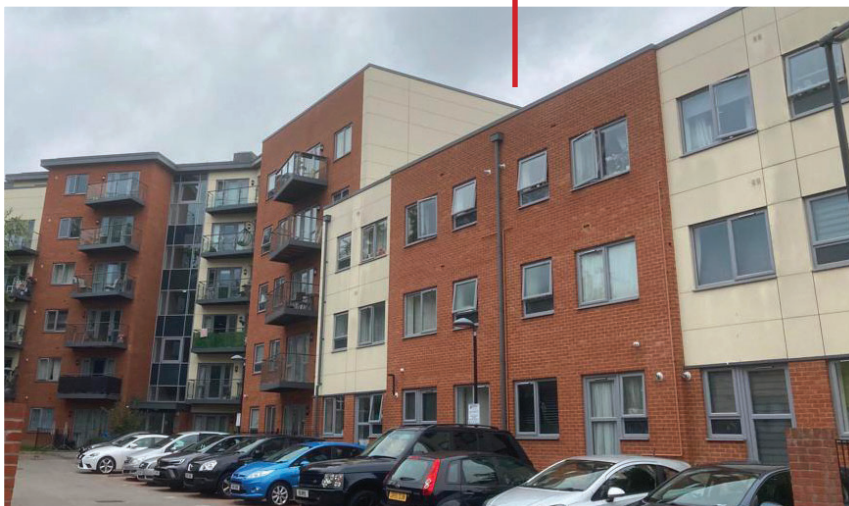
Hyde Fire Safety Framework



## PROJECT SCOPE

Fire safety works, replacing existing cladding with A2 - s1, d0 fire-safe cladding. Remove Kingspan K15 insulation and cavity barriers. Seal and retain windows, plus single drop of curtain wall. Refit new Rockwool insulation and Cavity barriers. Remove and replace Balcony Decking, ancillary Works (re-fit + test LP system). All brickwork and brickwork insulation was also replaced.





## KEY OUTCOMES

Resident safety assured with A2 - s1, d0 fire-rated cladding installed

Best value achieved by a solution with long-term integrity surpassing current standards.

High quality refurbishment that matches the original visual look of the building

Completed whilst fully occupied with minimum disruption to residents

Should the cladding no longer be required it is 100% recyclable.