

Birmingham Women's Hospital, *Birmingham*

CONTRACT VALUE

£9.9m

BUILDING

Main Hospital Building

PROJECT DURATION

Dec 2023 - March 2025

CLIENT

The Birmingham Women's and Children's NHS Foundation Trust

MAIN CONTRACTOR

design build facades
Principal Designer and
Principal Contractor

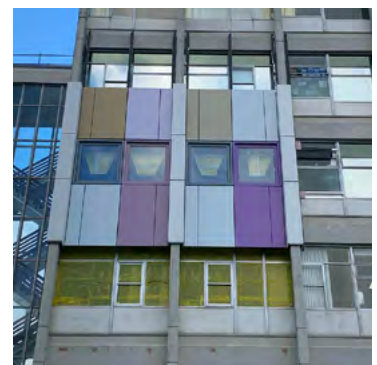


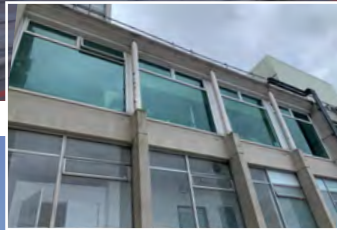
PROJECT SCOPE

The hospital environment needed to be improved to regulate the temperature of the building throughout the year, to retain the heat in the winter and keep wards and departments cool in the summer. The works comprised Polyester Powder Coated (PPC) aluminium overcladding, replacement high performance windows, internal linings to windows, new doors, refurbishment of entrance enclosure and canopy; M&E rationalisation.



The preconstruction stage resulted in a complete on-site full-size mock-up in just 8 weeks.





The works will deliver significant progress towards the Trust's ambitious decarbonisation plans.





Internal area cleared and protected.



“... in the summer we used to have to buy portable air conditioning units for each ward, and in the winter we used to hire electric heaters and put around the wards, we don't get those calls any more”.

Paul Scott, Senior Estates Capital Project Manager



KEY OUTCOMES

Building life extended by more than 60 years

Heating energy consumption reduced by up to 80%

Operational carbon emissions reduced by up to 80%

Contemporary quality building - “We've had an amazing response to this project”

Capital payback in c.10 years from savings in heating energy alone

Close collaboration ensured project progressed whilst the building was fully occupied with minimal disruption to patients and staff.